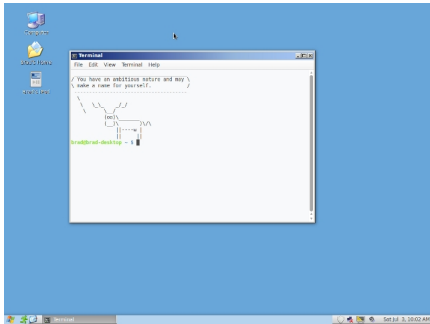


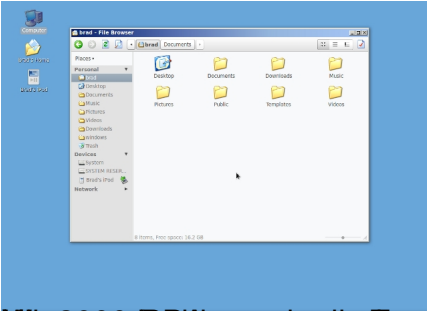
As any Linux user knows, Gnome has the ability to be changed, AKA Skinned, to look however you want it to look. From Mac OS X to a Windows OS to about anything at all. Today I will give you step by step instructions on how to change Gnome to look like Windows 2000, one of the best Windows OS versions ever, IMO.



First of all download this archive, it has the two files that you will need for the customizing.

[Download](#)

Installing these files is very simple, you can go through the Gnome menu to Appearance, or run `gnome-control-center`, and click on the Appearance button. Simply drag and drop the two files in this archive to the Appearance window, and apply them when the windows offers you the chance.



Windows 2000. For a person who wants to get the look of Windows 2000, there are several ways to do it. One of the ways is to install Windows 2000 on a virtual machine. Another way is to use a theme that mimics the look of Windows 2000. The third way is to use a desktop environment that is designed to look like Windows 2000. The fourth way is to use a window manager that is designed to look like Windows 2000. The fifth way is to use a desktop environment that is designed to look like Windows 2000 and a window manager that is designed to look like Windows 2000. The sixth way is to use a desktop environment that is designed to look like Windows 2000 and a window manager that is designed to look like Windows 2000. The seventh way is to use a desktop environment that is designed to look like Windows 2000 and a window manager that is designed to look like Windows 2000. The eighth way is to use a desktop environment that is designed to look like Windows 2000 and a window manager that is designed to look like Windows 2000. The ninth way is to use a desktop environment that is designed to look like Windows 2000 and a window manager that is designed to look like Windows 2000. The tenth way is to use a desktop environment that is designed to look like Windows 2000 and a window manager that is designed to look like Windows 2000.